

## RECON OUTRIGHT PARTS SALE



**793C/D/F A FRAME**  
 RECON OUTRIGHT: \$50,000+gst ea.



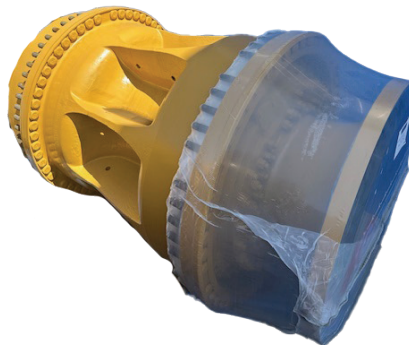
**785/789C/D A FRAME**  
 RECON OUTRIGHT: \$40,000+gst ea.



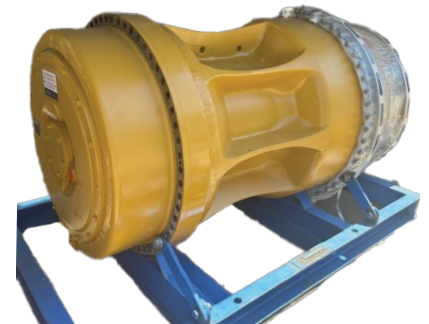
**24M FRONT AXLE GROUP**  
 RECON OUTRIGHT: \$140,000+gst ea.



**793C/D/F FINAL DRIVE**  
 RECON OUTRIGHT: \$200,000+gst ea.



**785C/D FINAL DRIVE**  
 RECON OUTRIGHT: \$140,000+gst ea.



**789C/D FINAL DRIVE**  
 RECON OUTRIGHT: \$180,000+gst ea.



**D11R/T TRANSMISSION**  
 RECON OUTRIGHT: \$80,000+gst ea.



**777G TRANSMISSION**  
 RECON OUTRIGHT: \$130,000+gst ea.



**789C TRANSMISSION**  
 RECON OUTRIGHT: \$120,000+gst ea.

### CONTACT OUR SALES TEAM

SEAN 📞 0458 793 777

ADAM 📞 0428 836 347

MICK 📞 0418 211 936

BRETT 📞 0499 856 166

LUKE 📞 0455 260 889

JAI 📞 0429 955 572

SCOTT 📞 0432 079 628

ASHLEY QLD 📞 0437 740 429

RYAN QLD 📞 0400 880 638

## RECON OUTRIGHT PARTS SALE



**777F FINAL DRIVE**  
RECON OUTRIGHT: \$100,000+gst ea.



**793D TRANSMISSION**  
RECON OUTRIGHT: \$150,000+gst ea.



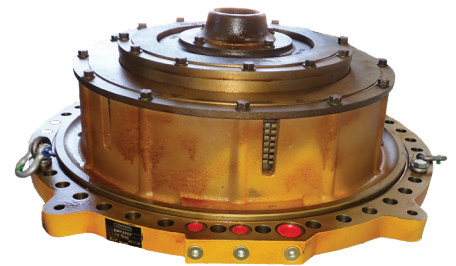
**793D FRONT WHEEL GROUP**  
RECON OUTRIGHT: \$75,000+gst ea.



**D11T TORQUE CONVERTER**  
RECON OUTRIGHT: \$45,000+gst ea.



**D10R/T FINAL DRIVE**  
RECON OUTRIGHT: \$45,000+gst ea.



**D11R/T SCAB**  
RECON OUTRIGHT: \$25,000+gst ea.



**D10R/T RIPPER LIFT CYLINDER  
D10R/T RIPPER TILT CYLINDER**  
RECON OUTRIGHT: \$10,000+gst ea.



**D11R/T BLADE LIFT CYLINDER**  
RECON OUTRIGHT: \$18,000+gst ea.



**D11R/T RIPPER LIFT CYLINDER  
D11R/T RIPPER TILT CYLINDER**  
RECON OUTRIGHT: \$10,000+gst ea.

### CONTACT OUR SALES TEAM

SEAN 📞 0458 793 777

ADAM 📞 0428 836 347

MICK 📞 0418 211 936

BRETT 📞 0499 856 166

LUKE 📞 0455 260 889

JAI 📞 0429 955 572

SCOTT 📞 0432 079 628

ASHLEY <sup>QLD</sup> 📞 0437 740 429

RYAN <sup>QLD</sup> 📞 0400 880 638